

Sovereign Autoclave

Specifications for a Sovereign 200 & 250 E & DS

Design Features

- 200 or 250 litres
- MP25 Controller
- Economy round chamber
- Robust space saving design
- Integral drip tray
- Grade 316 stainless steel chamber
- Anti door bolt over tight mechanism
- Complete versatility for almost any application

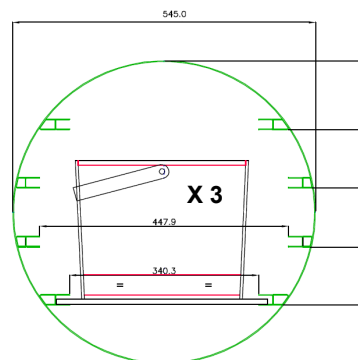
Optional Accessories

- Loading Baskets
- Waste Discard System
- Fan Assisted High Speed Cooling
- Condense Collector, which eliminates a drain requirement.
- Air removal HEPA filter (for CAT3 environments)
- Data Printers & Chart Recorders
- Vacuum & Drying options
- Anti Lime scale system
- Loading Trolleys & Carriages

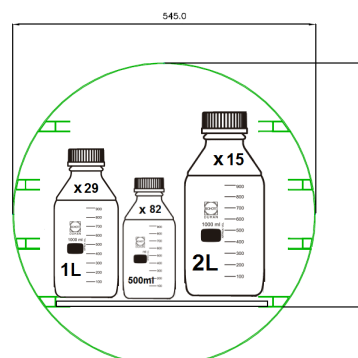


Capacities and dimensions (approx)		
Model	Sovereign 200	Sovereign 250
Autoclave Weight	470kg	480kg
Export Case Size	990w x 1970h x 1610d	990w x 1970h x 1610d
Overall Dimensions	830w x 1800h x 1450d	830w x 1800h x 1450d
Chamber Dimensions	545 Ø x 860d	545 Ø x 1057d
Chamber Capacity	200 Litres	250 Litres
Water Consumption (in chamber / typical per cycle)	750ml	750ml
Water Consumption (Steam generator / typical per cycle)	16 litres	16 litres
1L Media Bottles	29	29
2L Media Bottles	15	15
500ml Media Bottles	82	82
NHS Discard Boxes	H250xW320xL320 (3)	H250xW320xL320 (3)
Waste Discard Dimensions	H198xW405xL470 (2)	H198xW405xL470 (2)
Trolley	H1045xW580xL1290	H1045xW580xL1290

Sovereign 200 & 250

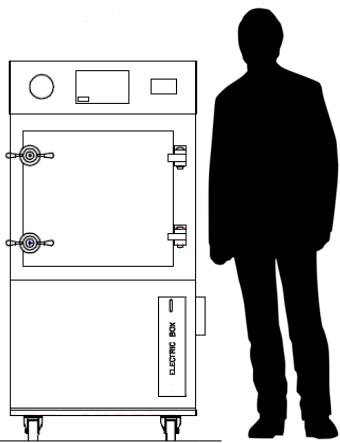


Sovereign 200 & 250

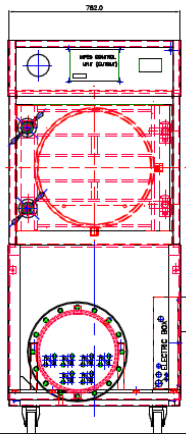


Safe Design Operating Limits		
Model	Sovereign 200	Sovereign 250
Max working temperature	138°C	138°C
Min working temperature	7°C	7°C
Max ambient temperature	28°C	28°C
Min ambient temperature	11°C	11°C
Max hydraulic pressure	4.14 Bar	4.14 Bar
Max working pressure	2.62 Bar	2.62 Bar
Max working vacuum	Minus 1 Bar	Minus 1 Bar

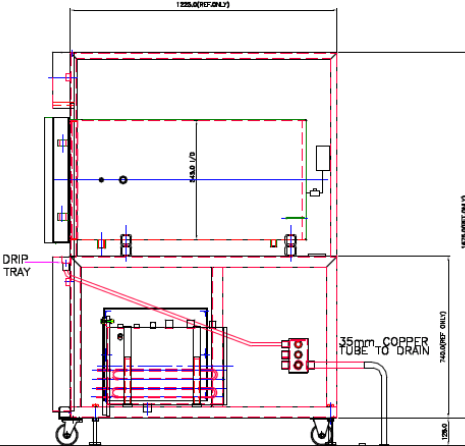
Human Scale



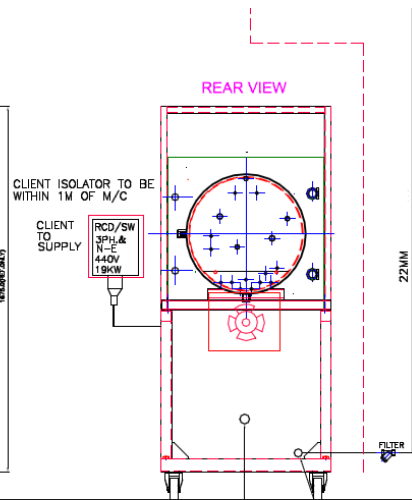
FRONT VIEW



SIDE VIEW



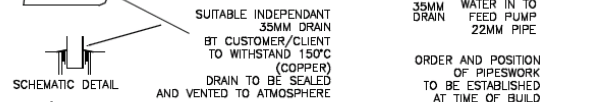
REAR VIEW



Site Requirements (E Version)		
Electrical site requirement: 40 Amp Switched RCD required		
Model	Sovereign 200E	Sovereign 250E
Drain Requirements	150°C 35mmØ Copper	150°C 35mmØ Copper
Voltage	380/415v	380/415v
Phase Requirement	3ph/N 50/60 Hz	3ph/N 50/60 Hz
Power Consumption	18kw	18kw
Fuse Rating	40 amp	40amp

Site Requirements (DS Version)		
Electrical site requirement: Switched RCD required		
Model	Sovereign 200DS	Sovereign 250DS
Drain Requirements	150°C 35mmØ Copper	150°C 35mmØ Copper
Mains Steam Supply	35 lb p/h @ 2.67 Bar	35 lb p/h @ 2.67 Bar
Voltage	230v	230v
Phase Requirement	1ph/N 50/60 Hz	1ph/N 50/60 Hz
Power Consumption	1kw	1kw
Fuse Rating	6amp	6amp

Typical Installation



Option Requirements

- Air Supply at 38 psi, 7 cfm required for Air Ballasting option
- Post Cycle Drying will require AC701C vacuum option.
- Drain requirement of 150°C, 35Ømm copper pipe at floor level.

General Requirements

- Sodium Chloride must not exceed a level greater than 500 ppm.
- Use regular mains water only. DO NOT USE distilled or RO water
- DS Version requires a mains steam supply of 38psi 9kw 35lbs/hour

Complying Standards

- PED Cat 3 Module B+D Notified Body: British Engineering No. 0040
- Harmonised Standards applied: EMC BS EN 61326
- Community directives applied : Pressure Equipment Directive – PED 2014/68/EU (formerly PED 97/23/EC)
- Designed in accordance with PD5500 (formerly BS5500) & BS2646
- Chamber and Door constructed of stainless steel BS-EN 10028-7:316
- ISO 9001: 2008
- CE Marked

Information is subject to change to suit different options added. This information is correct as of 7th September 2017, E & OE